

# Workforce Expert Panel Members



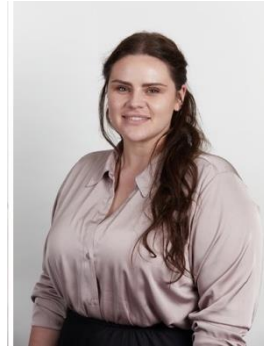
North East London  
Cancer Alliance



Sarita Yaganti  
Personalised  
Cancer Care  
Programme Lead  
North East London  
Cancer Alliance



Dr Angela Wong  
Chief Medical  
Officer  
North East London  
Cancer Alliance



Elizabeth Rowland  
Associate Director  
of Nursing & Lead  
Cancer Nurse  
Barking, Havering &  
Redbridge  
University Trust



Matt Morris  
Director of  
Workforce Strategy  
& Analytics  
Health Dynamics



Yvonne Beadle  
Workforce  
Programme  
Manager  
North East London  
Cancer Alliance



# Sarita Yaganti

## NELCA PCC Programme Lead

Sarita has over 22 years' experience working to improve cancer services across London, with knowledge spanning the full cancer pathway from early diagnosis to treatment, recovery and end-of-life care. She understands the profound physical and emotional impact a cancer diagnosis can have on individuals and families, and is committed to ensuring people receive compassionate, personalised support throughout their journey.

She works closely with healthcare professionals, community partners and patient representatives to improve access to high-quality cancer care and support people to live well with and beyond cancer. Her work includes strengthening personalised care, supporting the cancer workforce, and developing services that reflect the diverse needs of local communities.



# Dr Angela Wong

## Chief Medical Officer

### North East London Cancer Alliance

Angela is a driving force behind improving cancer diagnostics for residents across north east London. As Chief Medical Officer for the North East London Cancer Alliance, Angela works tirelessly on delivering innovation and service improvements for cancer patients.

A key focus is on Early Diagnosis, aiming to reduce the number of people being seen with late-stage cancer, where symptoms are more advanced and it is more difficult to treat.

She chairs the Diagnosis and Treatment delivery group, providing expert clinical leadership across a range of projects. This includes Artificial Intelligence to speed up lung cancer diagnosis, and implementing Best Practice Timed Pathways to help reduce variation, improve patient experience of care, and meet the Faster Diagnosis Standard.

She also designed, developed and delivered the Mile End Early Diagnosis Centre, one of the first of its kind in the country, which provides over 16,500 additional diagnostic procedures a year for residents in north east London.

She is also a gastroenterologist for Barts Health, performing endoscopy procedures for patients, and was Chair for cancer for Barts Health as well as Divisional Director at The Royal London Hospital.

Alongside her vast medical and health experience, Angela also holds an impressive array of business certificates in leadership, change and strategy, including Harvard Business School Managing Healthcare Delivery Certificate (May 2022) and Disruptive Strategy Certificate (August 2018.) She feels these are key to helping deliver transformation, value for money, and patient centered care.



# Elizabeth Rowland

BHRUT Associate Director of Nursing &  
Lead Cancer Nurse  
NELCA PCC Delivery Group Chair

Lizzie is an experienced nurse with a diverse background in secondary care, including Emergency Department, Cardiothoracic services across Level 1–3 care, and Cancer. She holds an MSc in Advanced Clinical Practice, achieved whilst working as Acute Oncology Nurse Practitioner.

In recent years she has held senior leadership roles within cancer services, driving service development, improving patient pathways, and supporting multidisciplinary teams to deliver high-quality, patient-centered care.

Currently Lizzie is Associate Director of Nursing (ADoN) and Lead Cancer Nurse at Barking, Havering & Redbridge University Trust, delivering both operational and strategic leadership across cancer services and the Trust's cancer programme. She also serves as Chair of the North East London Cancer Alliance Personalised Cancer Care Delivery Group, providing strategic oversight and leadership, advancing cancer care initiatives and innovation.



**Matt Morris**

Chartered FCIPD FREC FLPI MIoL

# Matt Morris

## Director of Workforce Strategy & Analytics

A transformation leader operating at the intersection of HR, finance and technology, Matt brings over 20 years' experience delivering workforce strategy across NHS, local government and complex commercial organisations. His career spans finance, large-scale technology-enabled workforce transformation (including Sky, British Airways and Centrica), and health and care - giving him a rare ability to translate Target Operating Models into costed, deliverable workforce plans.

Matt specialises in turning complex demand, capacity and workforce challenges into clear, risk-based strategies that align clinical, operational, financial and digital priorities. He works credibly with CEOs, CFOs, CPOs and CIOs to connect strategy to execution, accelerating benefits realisation and efficiency delivery.

His NHS work includes Board-level workforce strategy at Salisbury NHS FT, workforce redesign at Oxford University Hospitals, long-term workforce modelling for Princess Alexandra Hospital, and senior advisory roles at Buckinghamshire Healthcare to name a few.



# Yvonne Beadle

## NELCA Workforce Programme Manager

A compassionate and inclusive strategic leader with over 25 years experience in the health, social care and voluntary sectors, with the last 10 years in cancer care.

Yvonne has led national and regional programmes of work in both her current role at the North East London Cancer Alliance, and previously for Macmillan Cancer Support. These include programmes in Personalised Cancer Care, Cancer Nursing Workforce Development, Cancer Health In-Equalities, Psychological Cancer Care, and Integrated Cancer Care.

In addition, Yvonne has chaired the London Personalised Cancer Care Board and the London Lead Cancer Nurse Forum, and led a multi-million pound Macmillan cancer workforce transformation programme at Imperial College Healthcare NHS Trust.