



# NEL Cancer Alliance supported by NEL Training Hub is very pleased to host the Cancer Update Courses, delivered by **Red Whale**



## CHOOSE YOUR CANCER UPDATE COURSE

Tuesday 10 Dec 2024 10:00 to 16:00	Thursday 30 Jan 2025 10:00 to 16:00	Wednesday 12 Feb 2025 10:00 to 16:00	Saturday 5 Apr 2025 10:00 to 16:00
Stratford Old Town Hall, Main Hall, 29 The Broadway Newham, London E15 4BQ	Redbridge Town Hall, Main Hall 128-142 High Rd, Ilford, London IG1 1DD	The Tomlinson Centre, Queensbridge Rd, City and Hackney, London E8 3ND	The Tomlinson Centre, Queensbridge Rd, City and Hackney, London E8 3ND

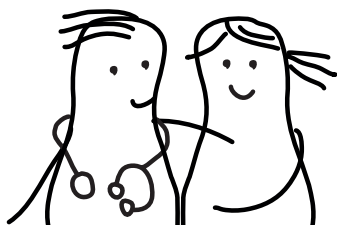
(Registration from 09:30)

These courses are for North East London workforce

Lunch & refreshments will be provided on the day

**To book one of the courses please see the booking instructions on the last page**

**PLEASE NOTE:** There is a non-refundable £10.00 contribution to register for the course

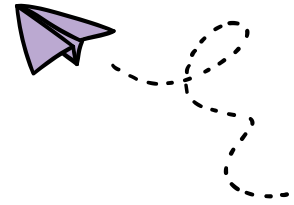


**Find out more information about your course on the next page!**





# Red Whale



We deliver practical, straightforward evidence-based learning and help to embed your learning by applying it to case studies and common clinical conundrums.

## What will be covered?

### Earlier diagnosis: avoiding pitfalls

Lung cancer and lung cancer health checks  
Bladder and renal cancer  
Colorectal cancer and FIT

### Spotting cancer in blood tests

- PSA testing
- Multi-cancer early detection testing
- Inflammatory markers

### Spotting cancer in vague symptoms

- Weight loss, abdominal pain, fatigue
- Ovarian cancer
- Myeloma

### Cancer genetics

- Lynch syndrome
- Familial ovarian and breast cancer

### Cancer and the menopause

- Breast cancer and menopause symptoms
- Bleeding on HRT and endometrial cancer

### Cancer care reviews and personalised care

- Mental health and cancer
- Financial toxicity

And more!

## What you get

- 5 hours of the latest and most relevant updates for primary care – delivered face to face.
- 12 months access to our online written resources
- 12 month access to the on-demand version of the course
- A copy of the Cancer Update printed handbook, with articles on all the topics covered on the day and more.

## The Cancer Update Handbook

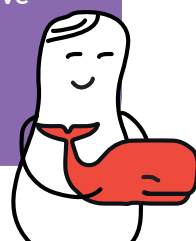
When you arrive at your course, you will receive a copy of the Cancer Update printed handbook. In it, you'll find all the articles on the topics covered on your course – as well as some additional ones. It is packed with pragmatic advice and tips to change your practice straight away and loads of ideas for audit and QA. A super handy reference source to use in your consultations.

## Online Written Resources

Red Whale Knowledge (previously GPCPD.com)

For even more learning than you'll find in our printed handbook, there's Red Whale Knowledge – our library of 900+ online written resources! Hundreds of articles, all in one place, covering more than 96% of the RCGP curriculum - like an online encyclopaedia for primary care professionals.

- 900+ continuously updated resources to give you a reliable source of information and help ease cognitive overload.
- The perfect in-practice tool with super-fast search function for quick and reliable answers in consultations.
- Ready-made protocols (we call them GEMS) to standardise practice within surgeries and PCNs.





## How to book one of the Cancer Update Face to Face course:

**Step 1:** Go to: [www.redwhale.co.uk/basket](http://www.redwhale.co.uk/basket)

**Step 2:** Enter your code: **RWm2ac3j1q243x0G7** in the voucher code box and click "**Apply**" The code will add a choice of courses to your basket for the discounted price of £10.

**Step 3:** Select the course you would like to book and click "Confirm selection"

**Step 4:** Click on the "**Proceed to checkout**" button. You will be prompted to "**Sign up**" for an account.

**Step 5:** If you are new to our website, follow the sign up steps (including verifying your email address). Otherwise, click on "**Login**" at the bottom of the screen and enter your email and password.

**Step 6:** Once you're logged in, click the checkout button and proceed to payment

**Step 7:** That's it! You now booked to the course. You also will get access to Red Whale Knowledge on the course date.

Should you need any help at any point in this process please contact us via the online chat or by emailing [inhousecourses@red-whale.co.uk](mailto:inhousecourses@red-whale.co.uk)

By proceeding with your booking you are agreeing with our [Terms and conditions](#) and have read our [Privacy notice](#).

