



England

NHS Cancer Programme Update

Ed Rose
Director of Elective, Cancer and Diagnostics

13th March 2024

The NHS Cancer Programme's priorities of achieving faster and earlier diagnosis and completing recovery from the pandemic go hand in hand

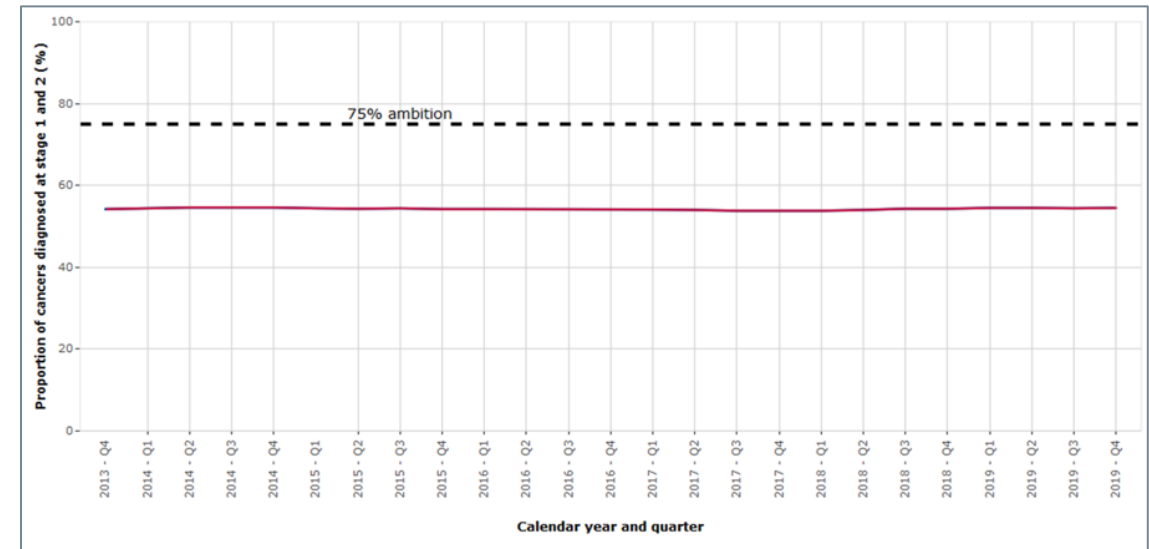
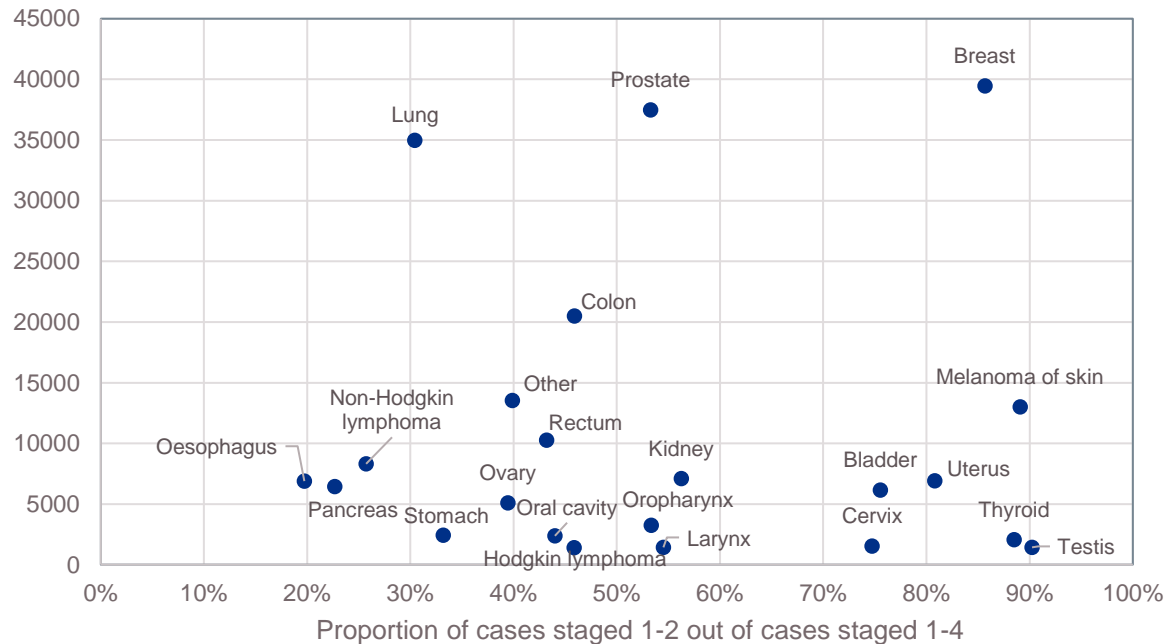
The priorities for the Programme are:

- Diagnosing cancer earlier - delivering on the Long Term Plan ambition to diagnose 75% of cancers at Stage 1 and 2 by 2028, contributing to the saving of an additional 55,000 lives by 2028.
- Improving cancer services to diagnose cancer faster, treat patients faster, and ensure complete recovery from the pandemic
- Improving the experience of cancer patients both during treatment and beyond



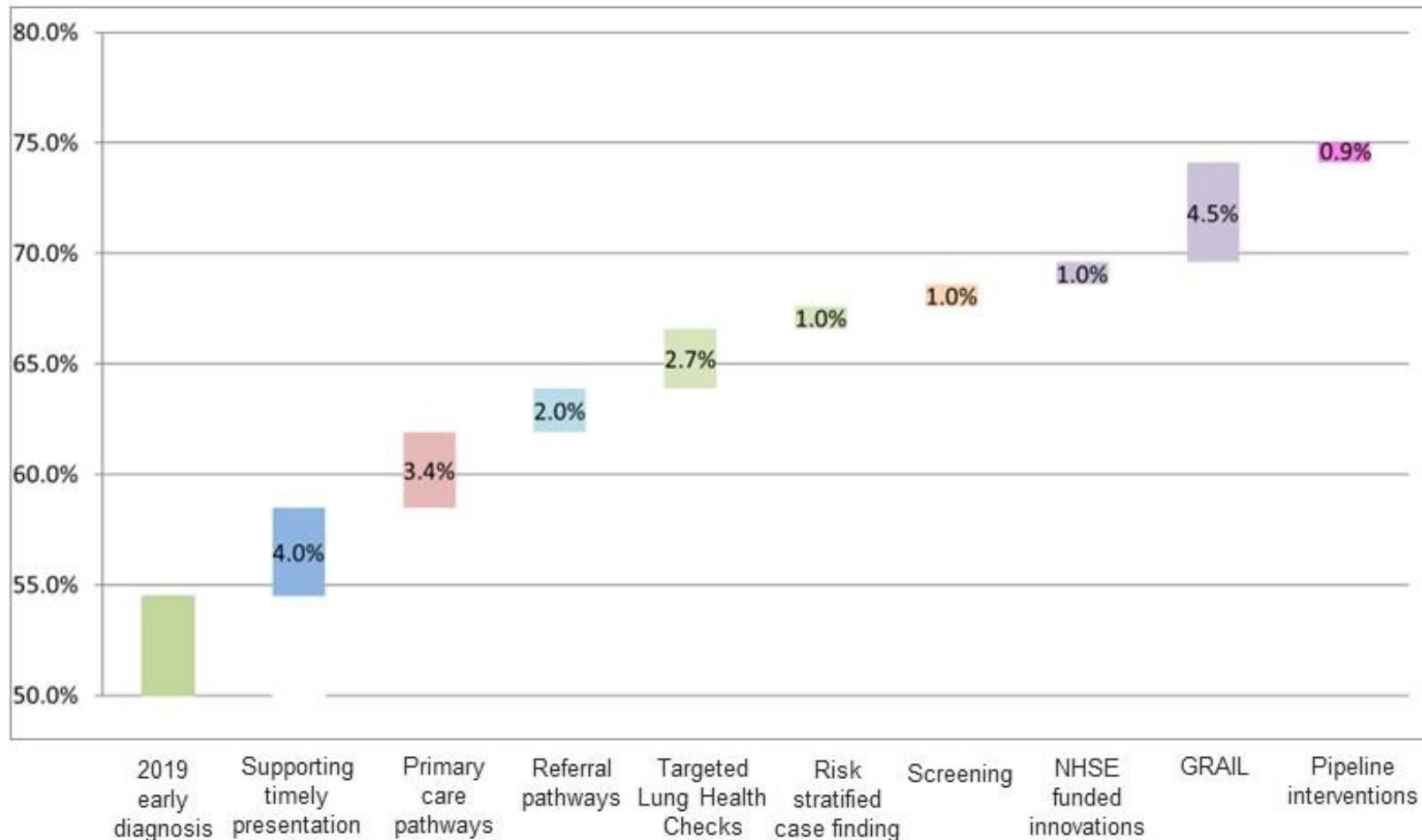
Historically, the proportion of patients diagnosed at early stage has remained static, at around 54-55%. Our ambition is to increase that to 75%

Proportion of early diagnoses by incidence (2019)



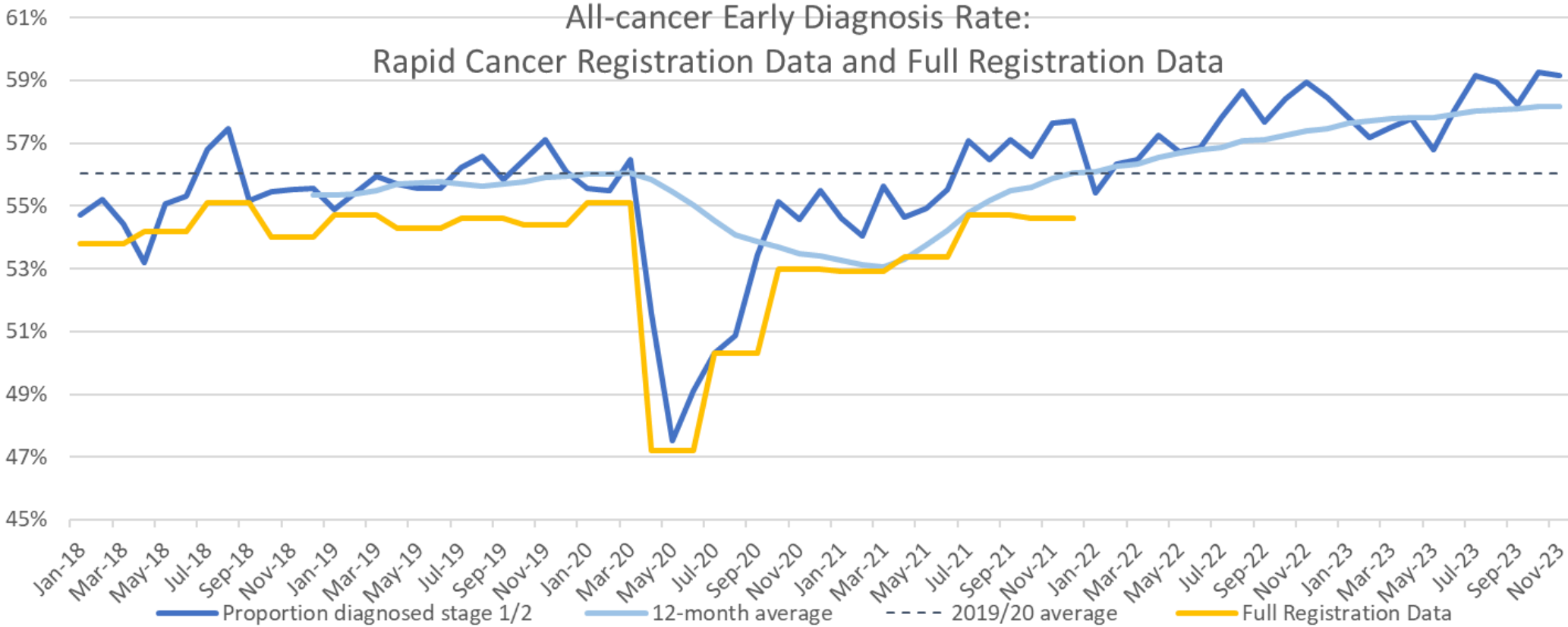
Our early diagnosis strategy comprises multiple pillars

Estimated impact of interventions on the early diagnosis rate



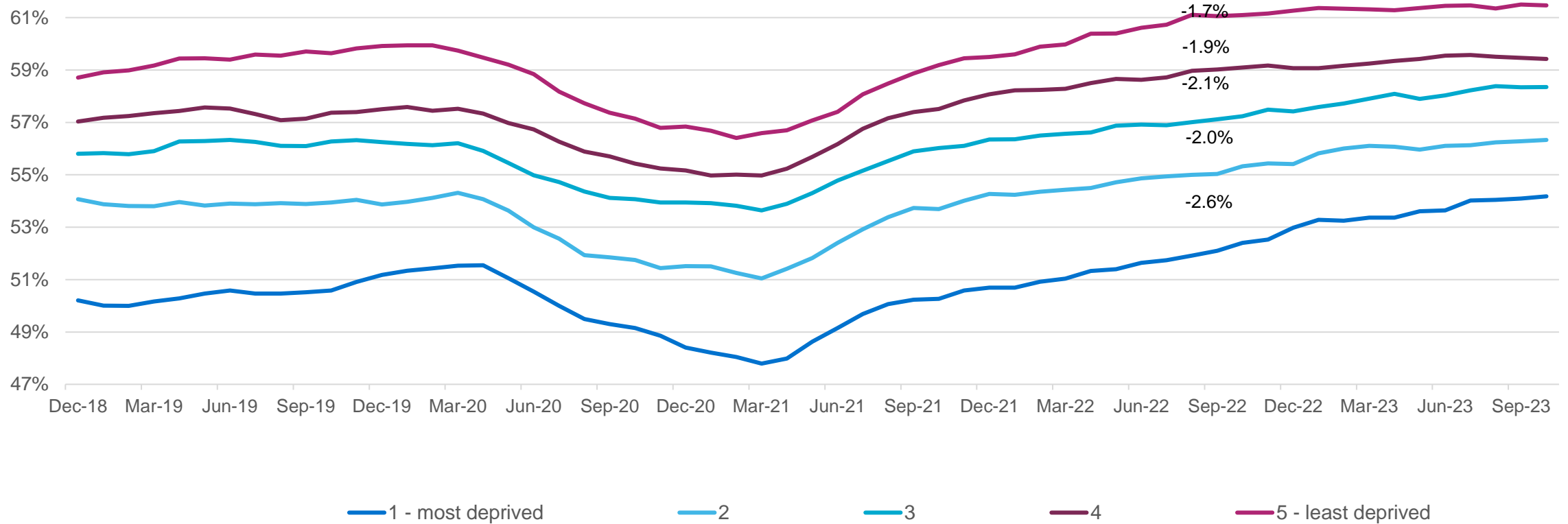
Improving earlier stage diagnosis

Early diagnosis rates have started to shift for the first time in a decade

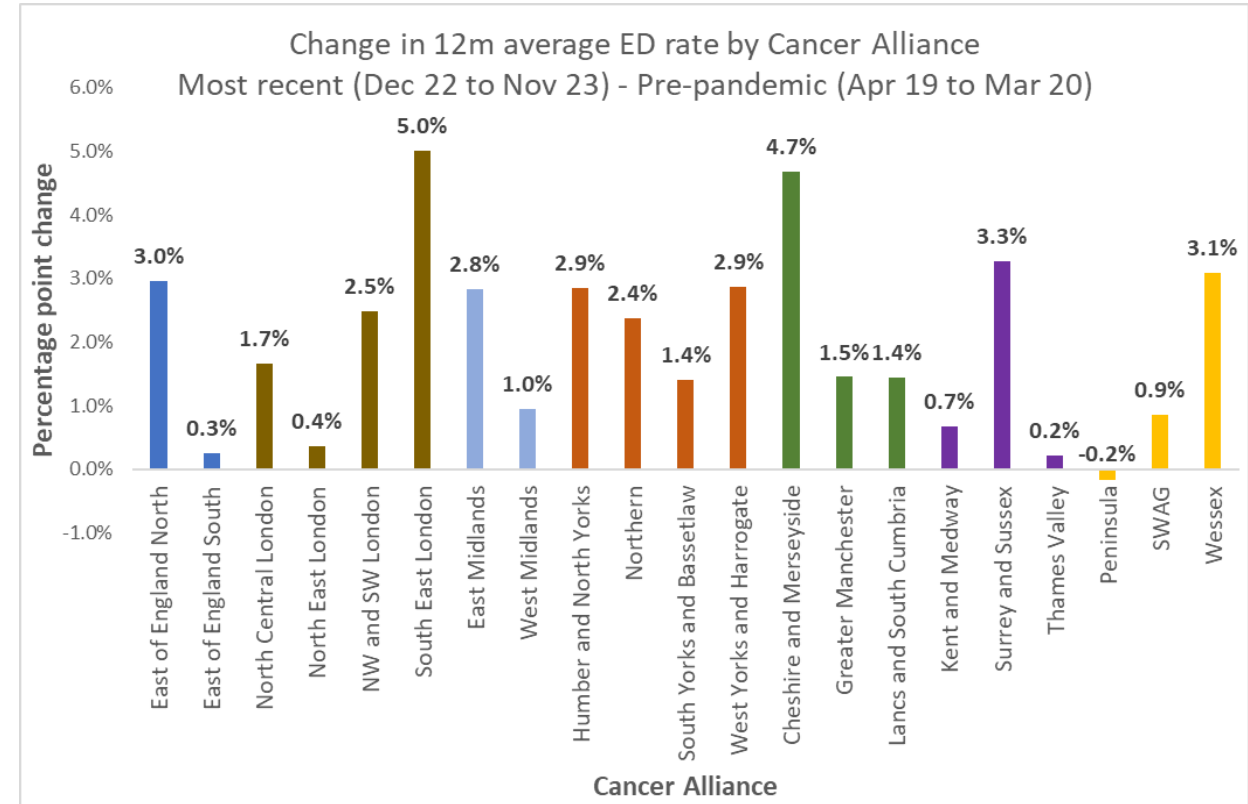
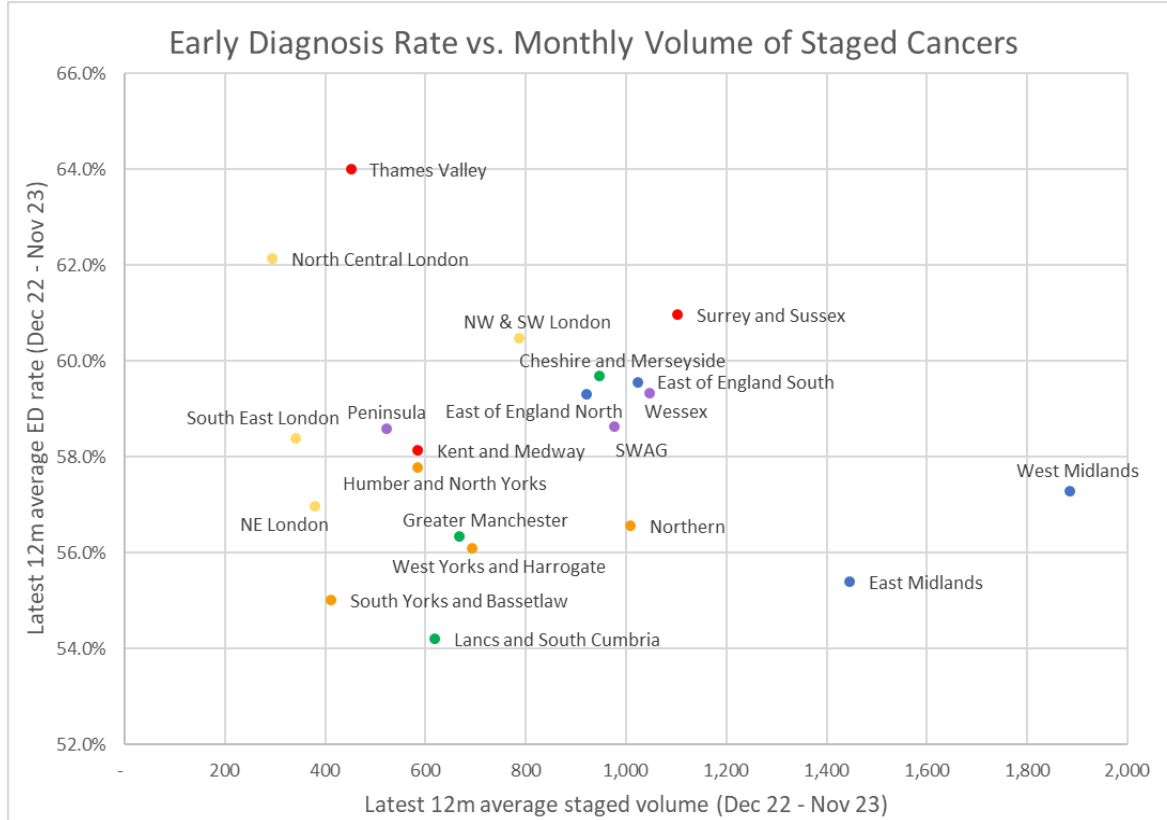


Our work to improve early diagnosis has driven improvements in health inequalities

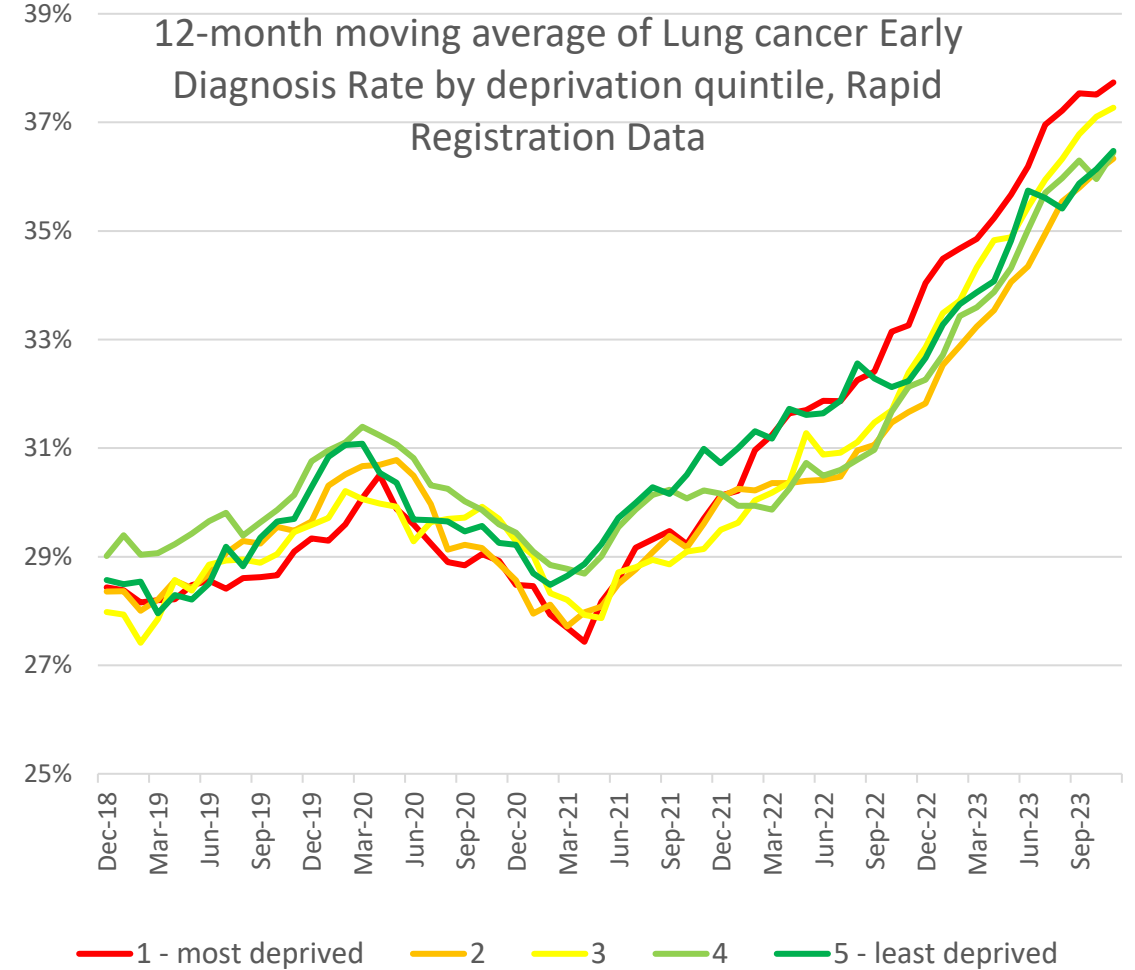
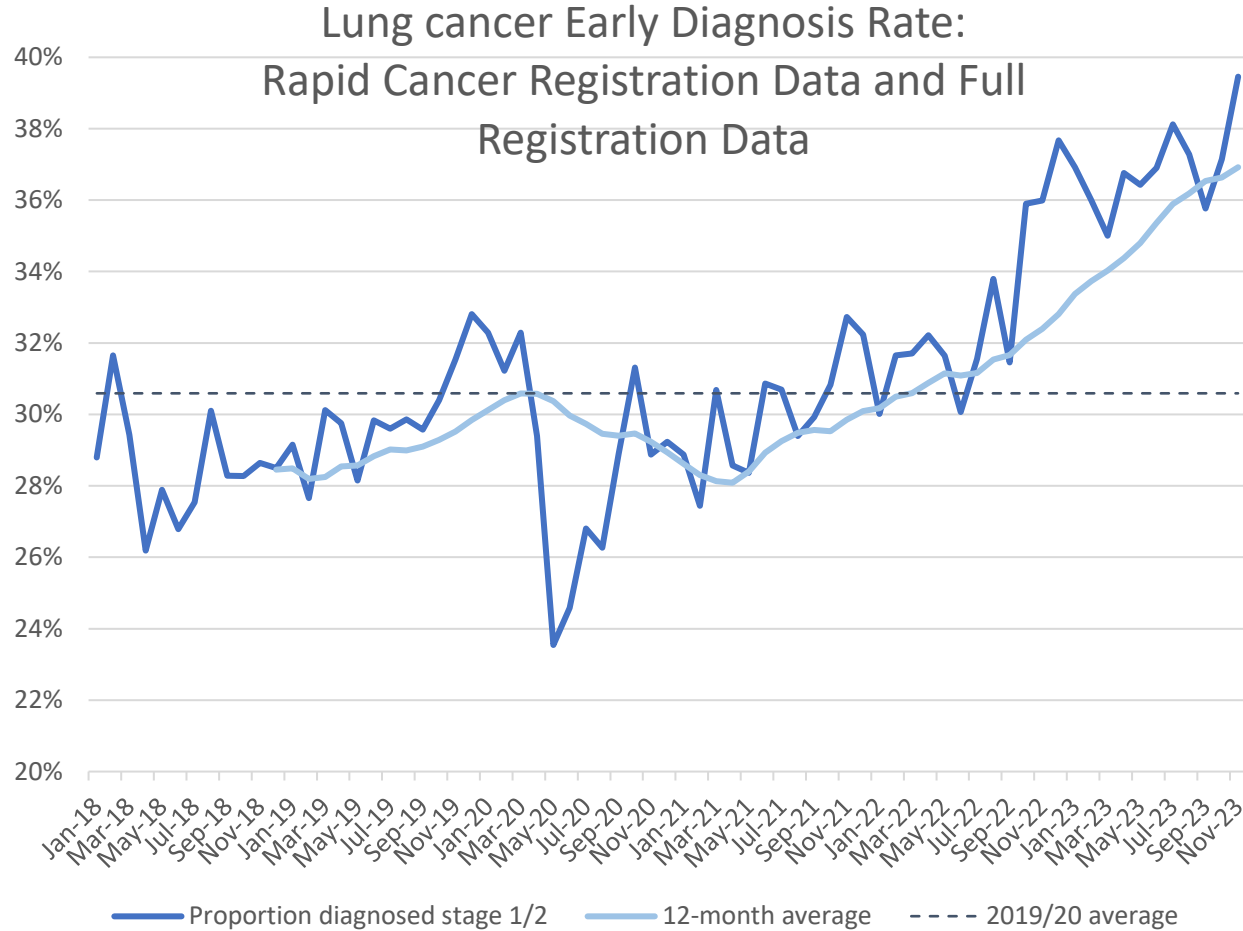
12-month moving average of All-cancer Early Diagnosis Rate by deprivation quintile, Rapid Registration Data*



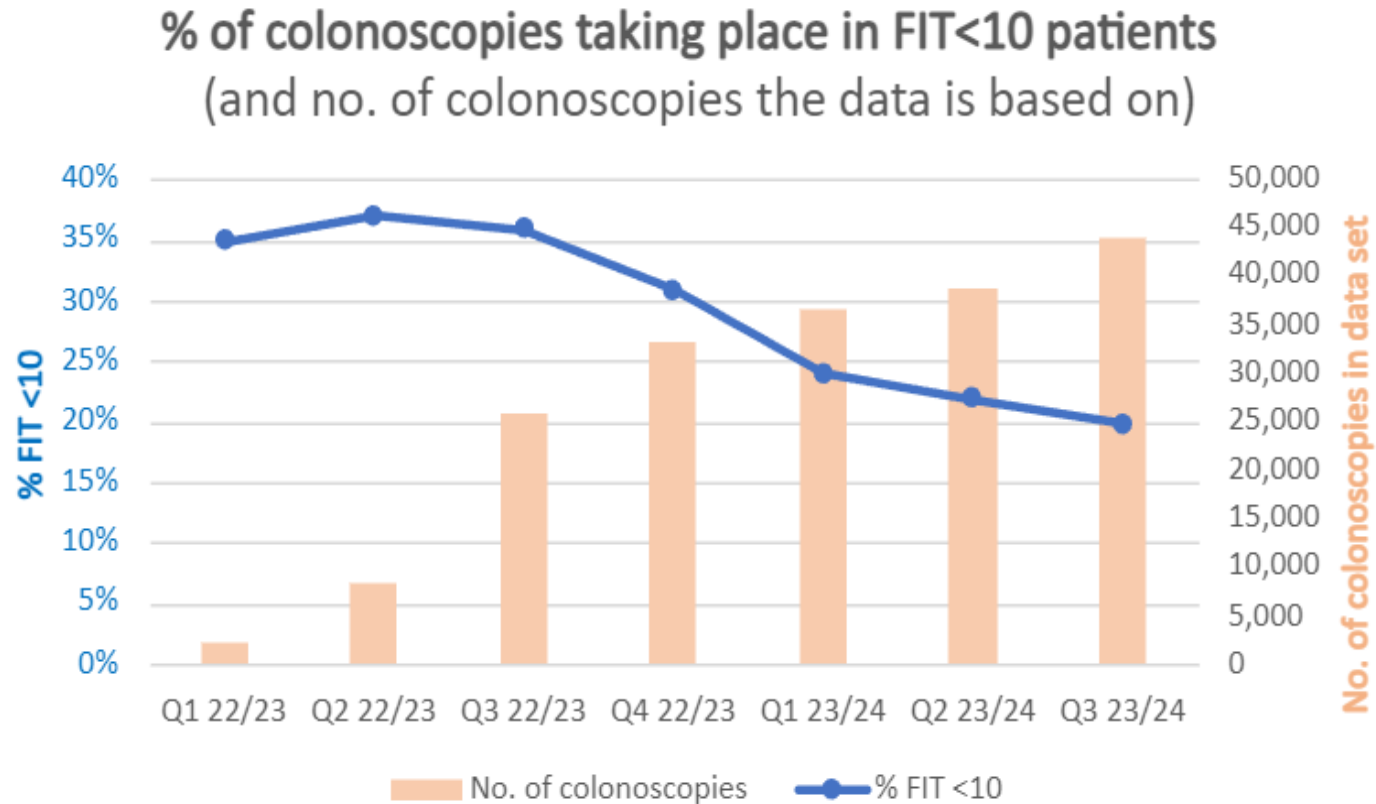
Early diagnosis has improved in 20 out of 21 Cancer Alliances compared to pre-pandemic levels, and variation has reduced



Targeted Lung Health Checks are already delivering results with over 3,100 cancers diagnosed so far, 76% at an early stage



We're increasing the number of people who can access bowel cancer screening and piloting increasing the sensitivity of the test



A range of targeted initiatives with smaller impact also support our overall target

BRCA

- Launched a programme offering testing for BRCA mutations to all Jewish people in the UK.
- 16,000 people have come forward since launching.
- 3,573 genetic test results have been completed with 96 people diagnosed with BRCA (2.7%)
- We intend to offer up to 60,000 tests over 3 years, identifying up to 2,500 people with BRCA for screening or preventative interventions.

Lynch Syndrome

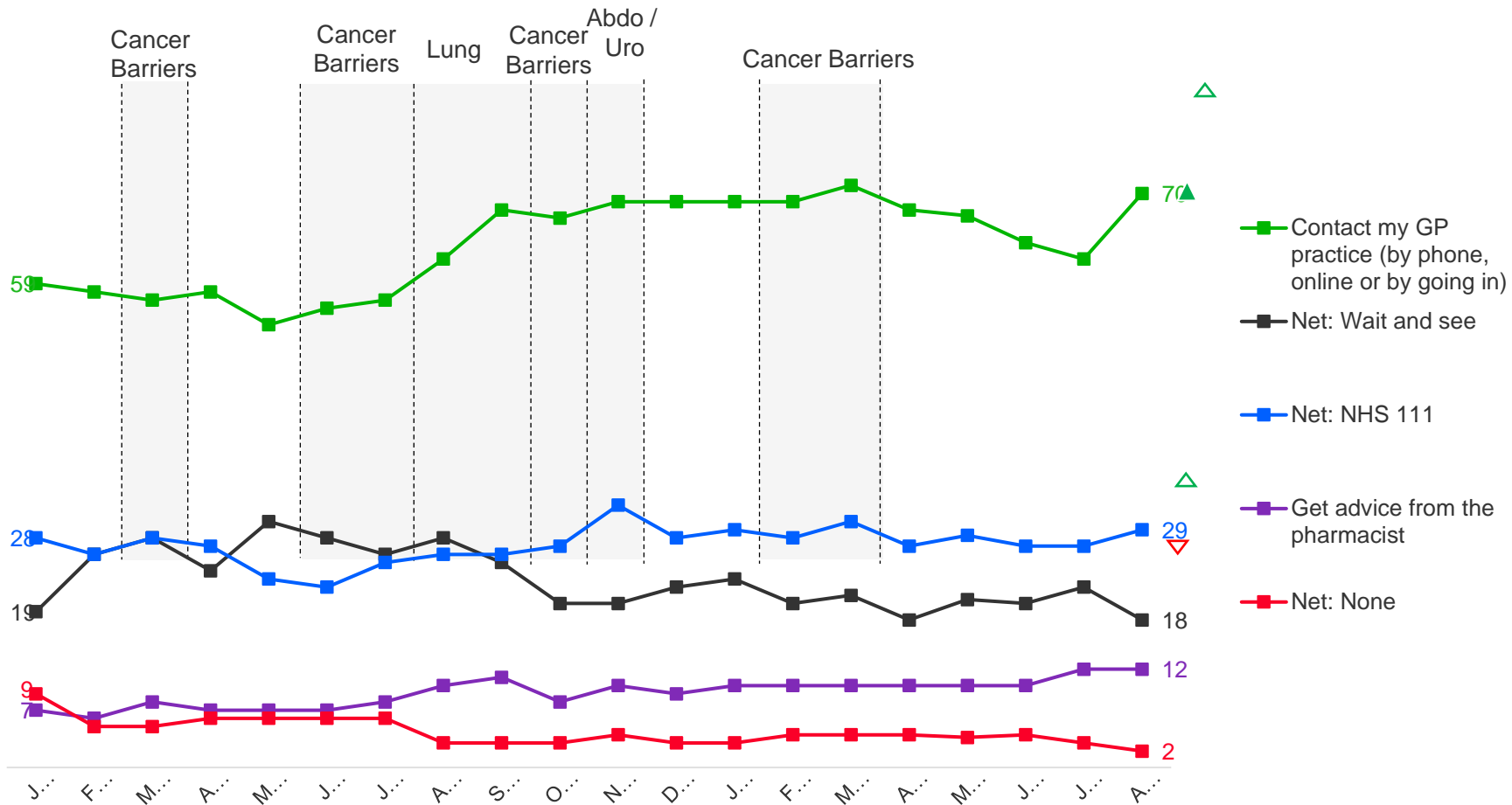
- Lynch testing rates have increased from 58% in 2021 to 95% for colorectal cancer, and from 66% in 2021 to 95% in for endometrial cancer.
- People with Lynch now receive 2/3-yearly colonoscopies via the Bowel Screening Programme to catch any cancers they develop at an early stage.

Community Liver Health Checks

- Partnering with Hepatitis C Operational Delivery Networks to fibroscans people at high risk of liver cirrhosis in the community
- To date we have delivered more than 39,000 fibroscans and referred more than 3,300 people with cirrhosis/advanced fibrosis into 6-monthly liver ultrasound surveillance.

Our expanded timely presentation strategy continues to drive up symptom awareness and increase propensity to act – but rolling activity is key

Intended service usage: something in your body doesn't feel right and you're worried that it might be cancer (%) - C2DE 50+



A cough that lasts three weeks or more could be a warning sign

Contact your GP practice

If you've had a cough for three weeks or more, don't ignore it. It's probably nothing serious but it could be a sign of cancer.

Your NHS wants to see you.
nhs.uk/cancersymptoms

Clear on cancer Help us help you

The NHS-Galleri trial is our highest profile example of innovation, but we have invested in many more

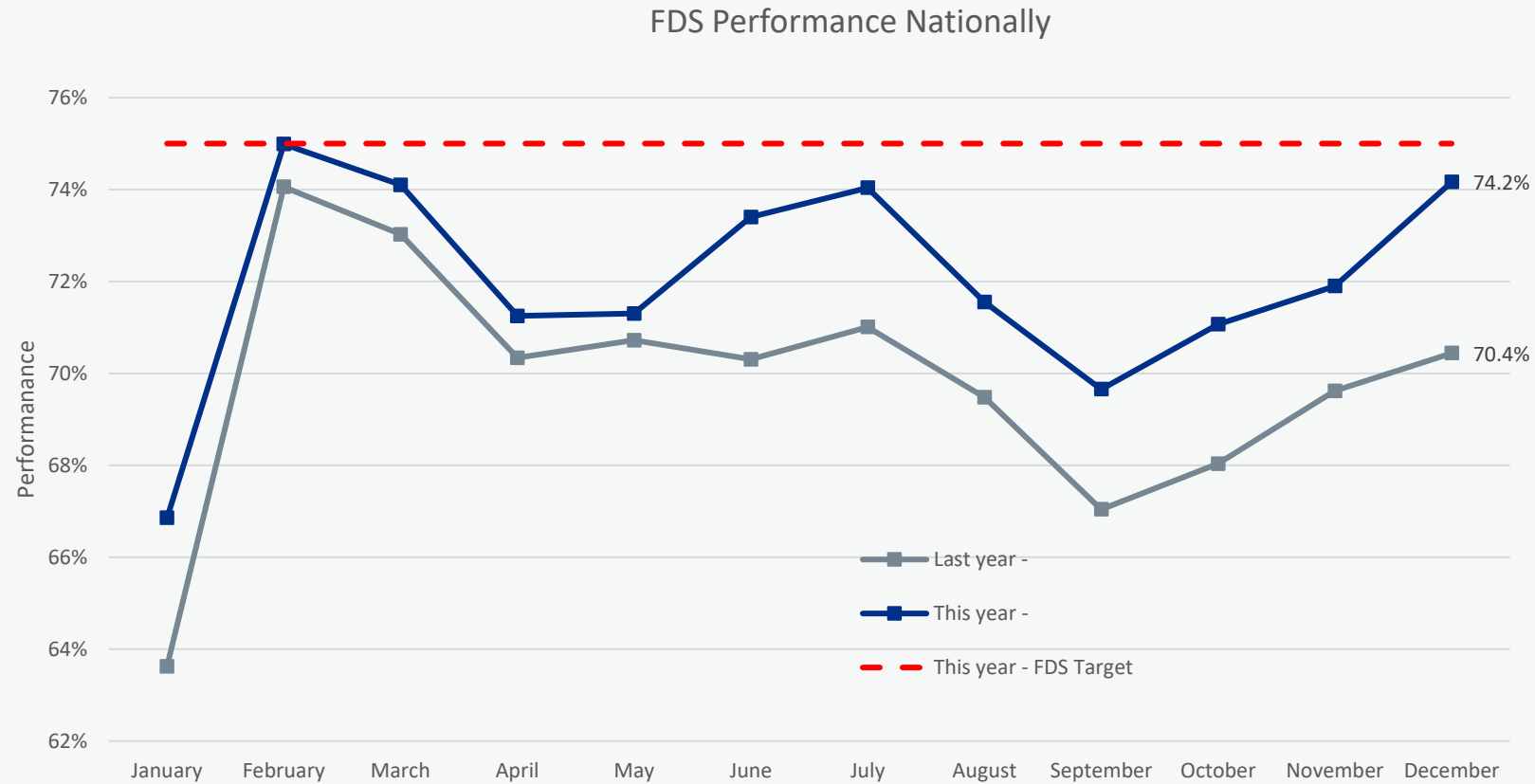
NHS-Galleri trial

- 140,000 participants across 8 Cancer Alliances
- Prevalent round results will be available in spring 2024
- Up to 1 million Galleri tests in areas of England not in the trial from summer 2024, if results from NHS-Galleri meet pre-agreed benchmarks.
- The pilot programme would offer this test at scale earlier than anywhere else in the world



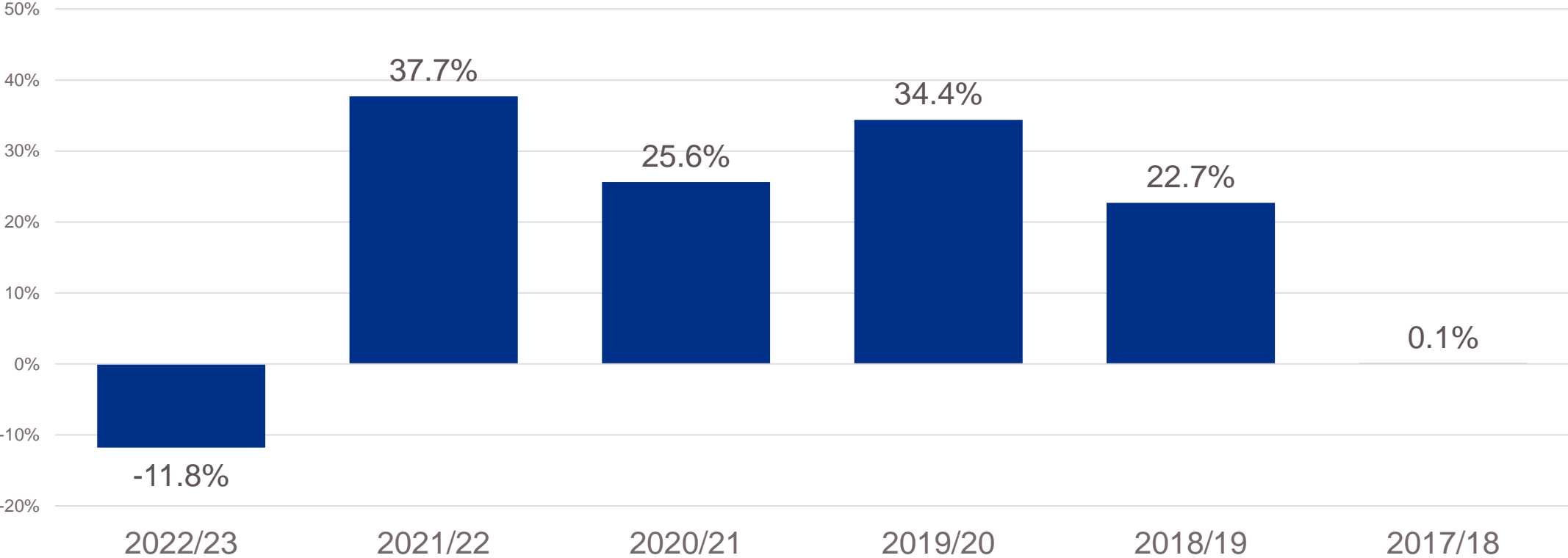
Progress against Cancer Waiting Times standards

The Faster Diagnosis Standard performance was 74.2% in December 2024, only 0.8% off the 75% standard and on track to meet the standard in March.

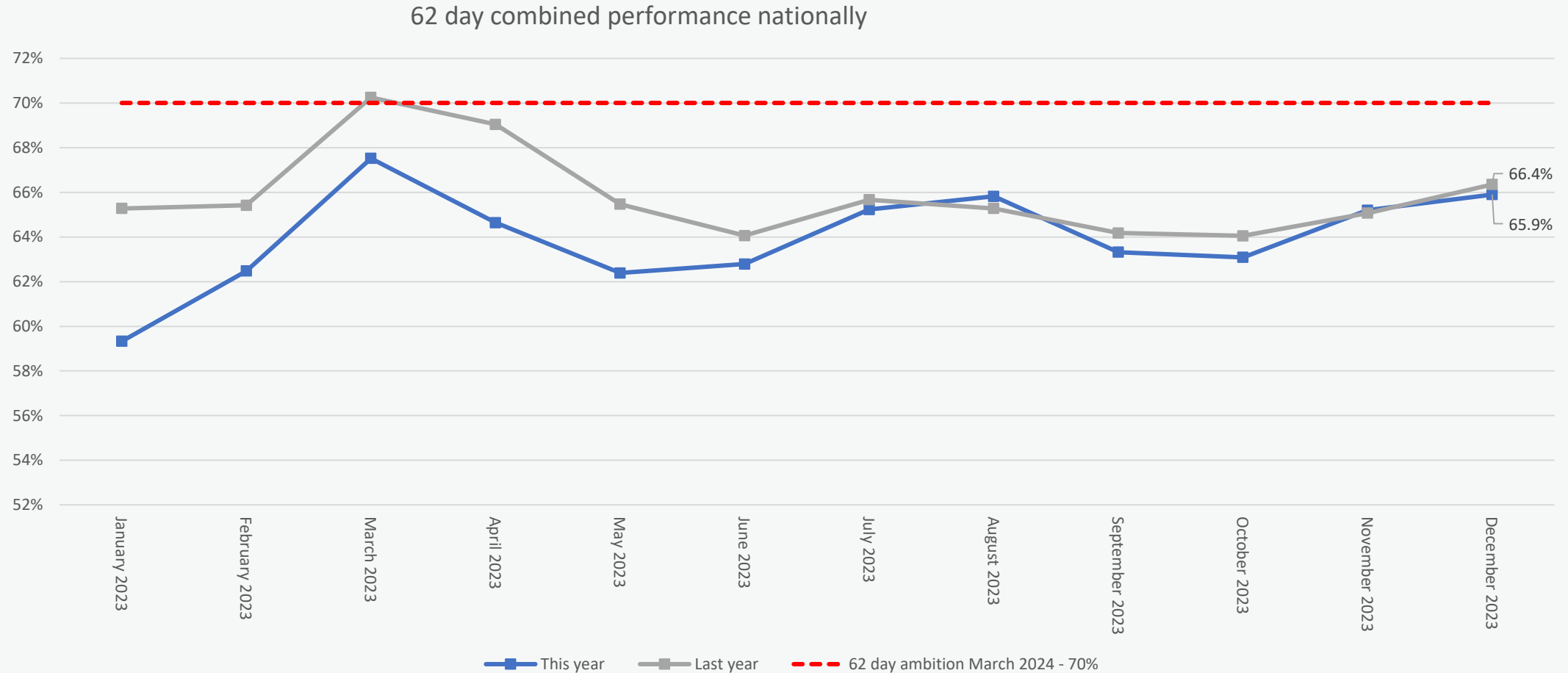


For the first time ever the 62 day backlog is lower than two years ago, and the system is working hard to reach the equivalent relative pre-pandemic position by the end of March (18,755)

Change in 62 day backlog by year (year end position vs 1 year ago)

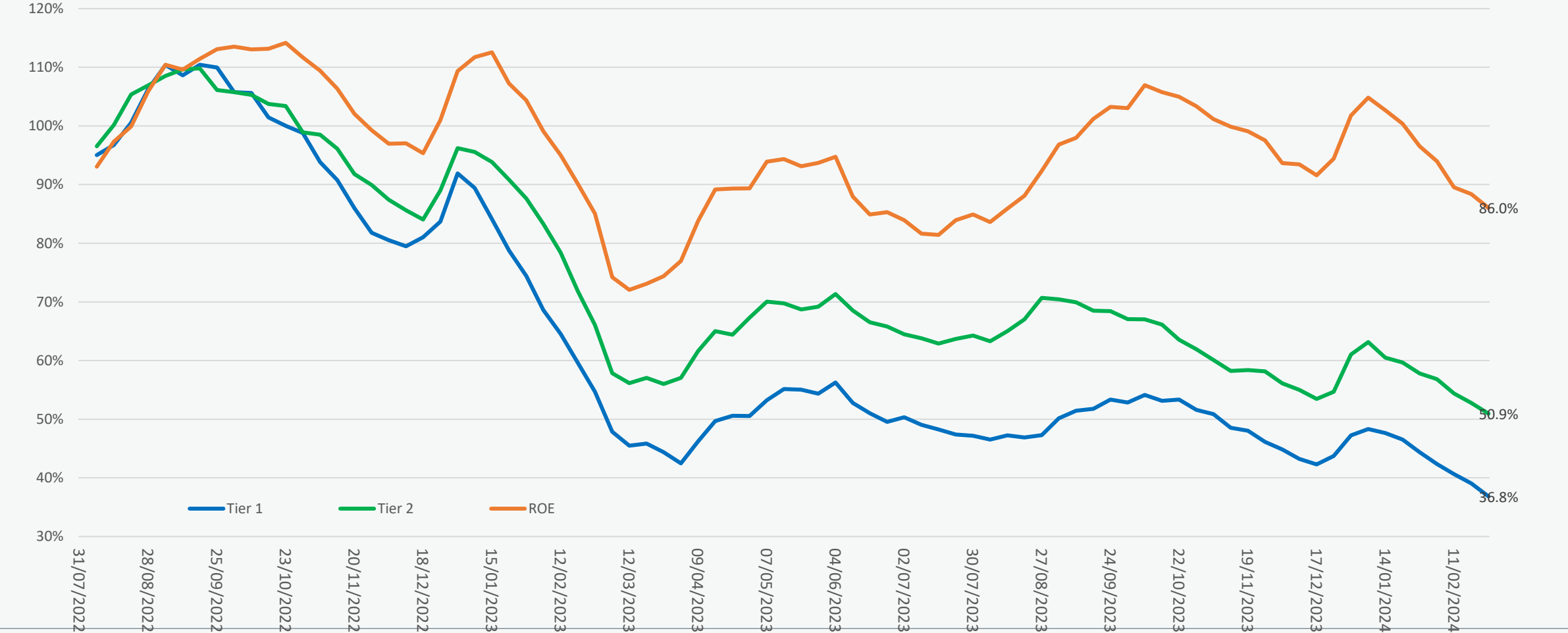


Next year we will pivot towards a full focus on the 62 day combined standard, as we continue to work towards reaching 70% by March 2024

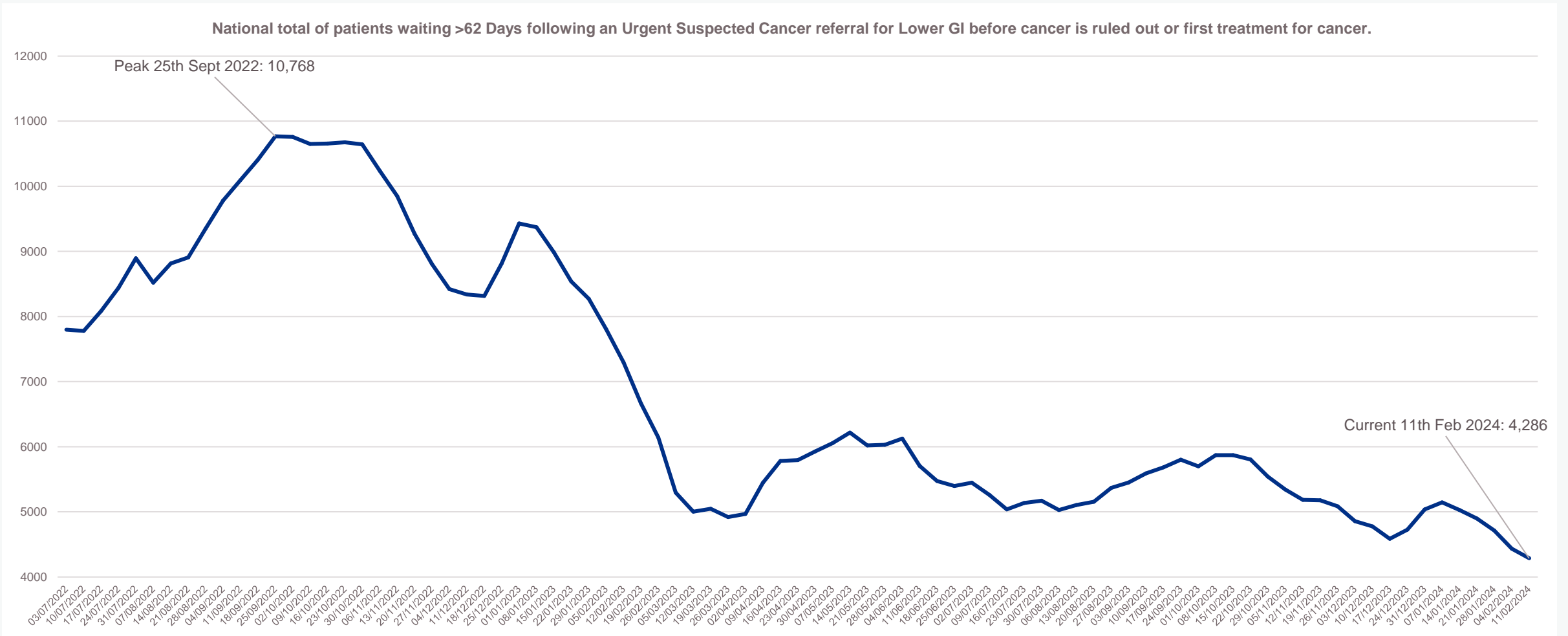


Tiering Trusts has been a key driver of improvements in cancer performance

Comparison of impact of being within the Tiers across England



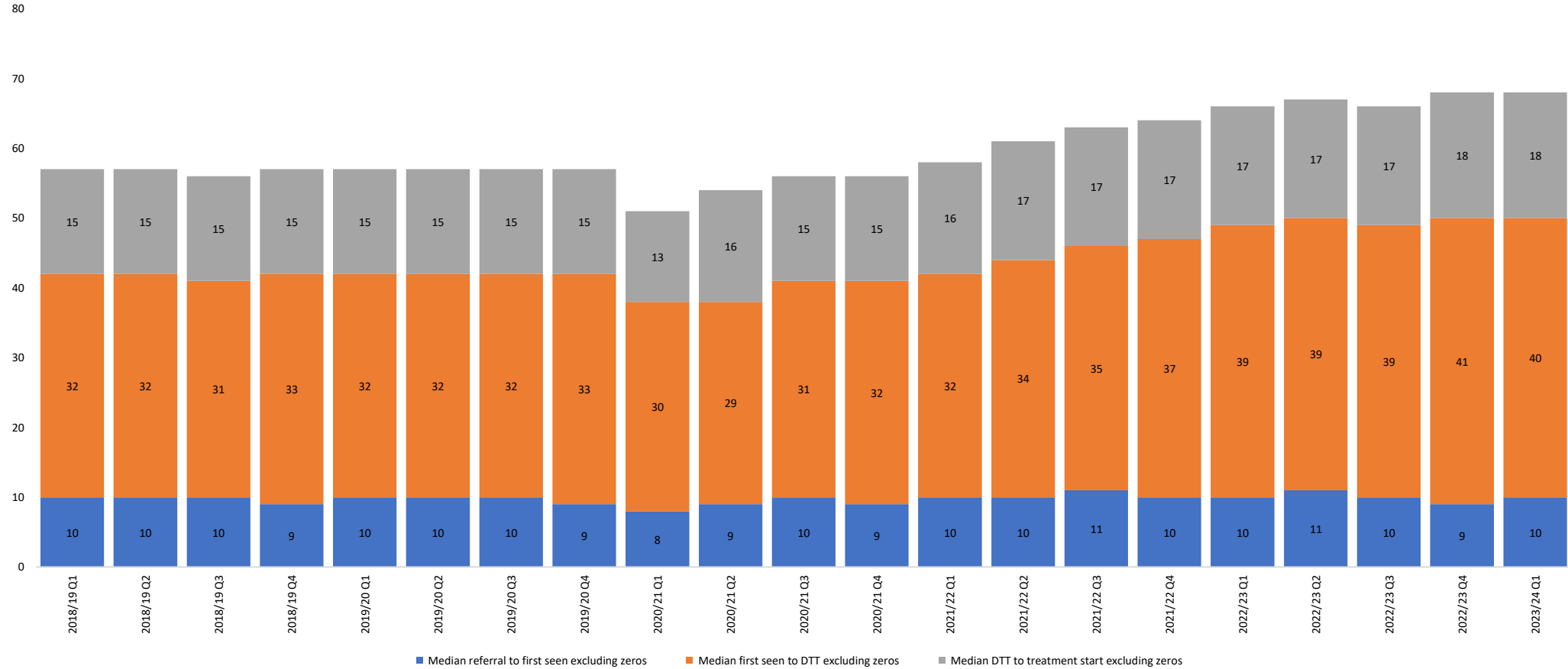
Improvements in Lower GI backlogs, driven largely by FIT implementation, has been the other key factor



Challenges to continued progress

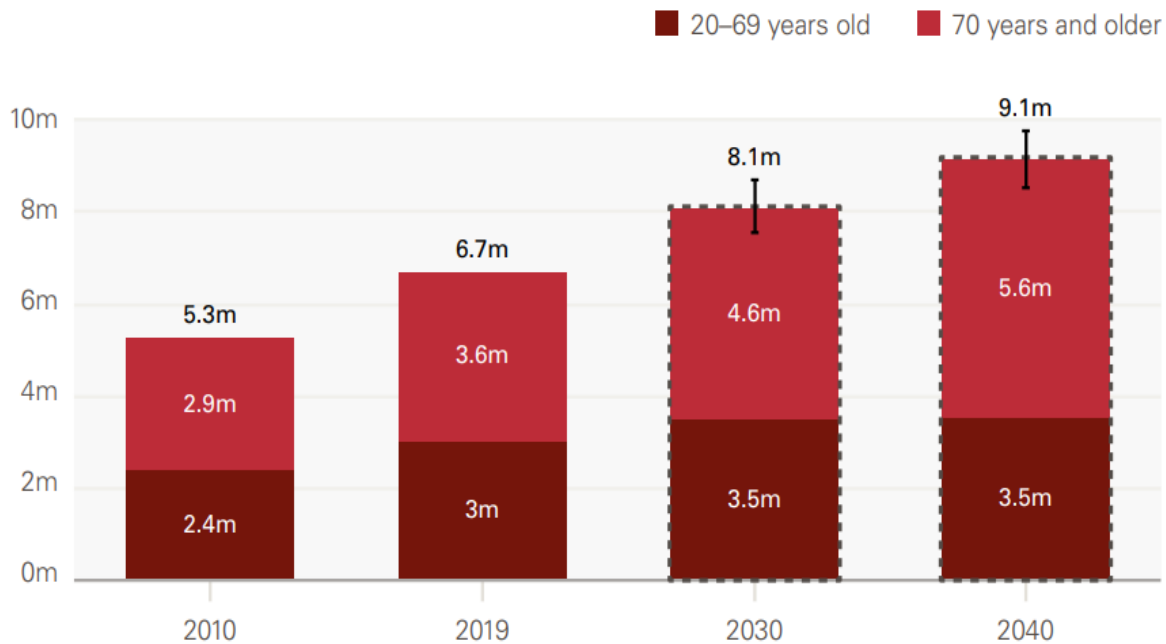
Diagnostics

Median length of each phase of the pathway (days) excluding patients with zero days

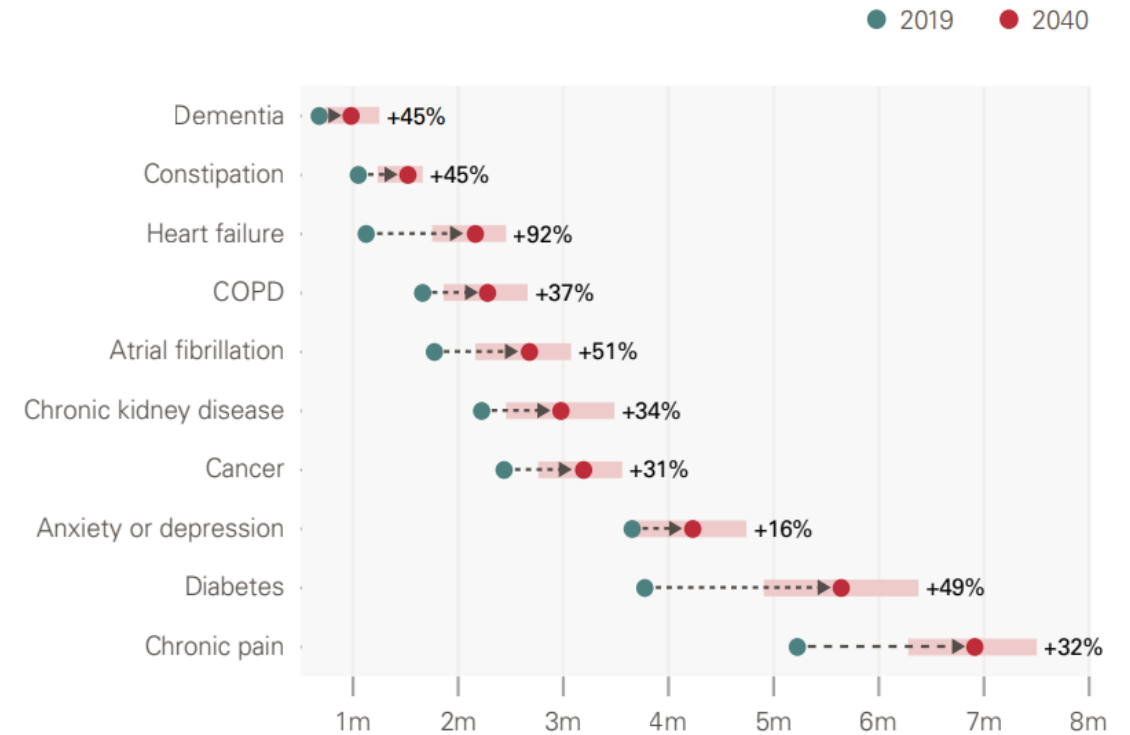


Primary care services

The estimated number of people living with major illness in England, past and projected to 2040



Projected total number of diagnosed cases for the 10 conditions with the highest impact on health care use England, 2019 and projected for 2040



The Health Foundation, July 2023: [Health in 2040: projected patterns of illness in England - The Health Foundation](#)

Workforce



Referrals

To increase earlier diagnosis we need to bring more people into the system. We will need to see a lot more people without cancer

75%



Capacity

If the system cannot keep pace with demand, we will build waiting lists and undermine operational performance

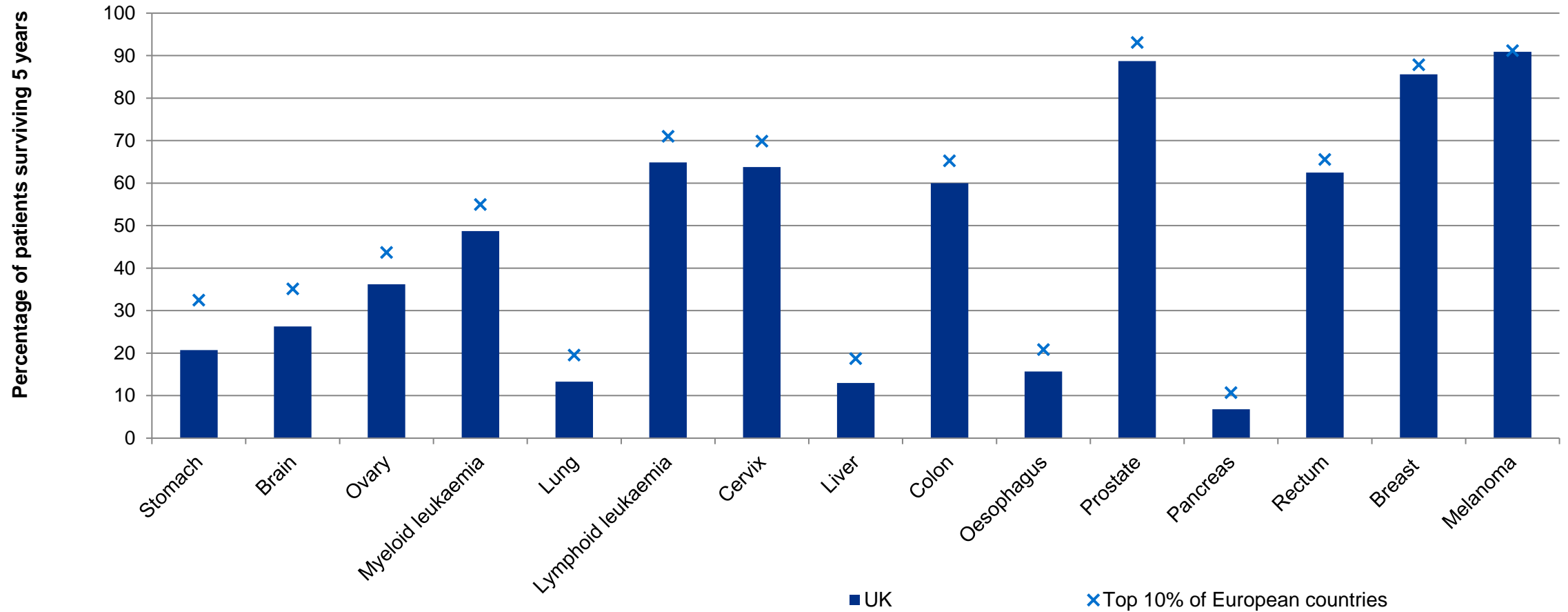
UK below OECD average for the number of doctors as a proportion of the population

National roll out of programmes like lung screening are reliant on workforce expansion

Cancer and non-cancer specific professions

Innovation

Estimated 5-year survival in the UK and the leading 10% of European countries (CONCORD, 2010-2014)



Sustaining an increase in earlier diagnosis